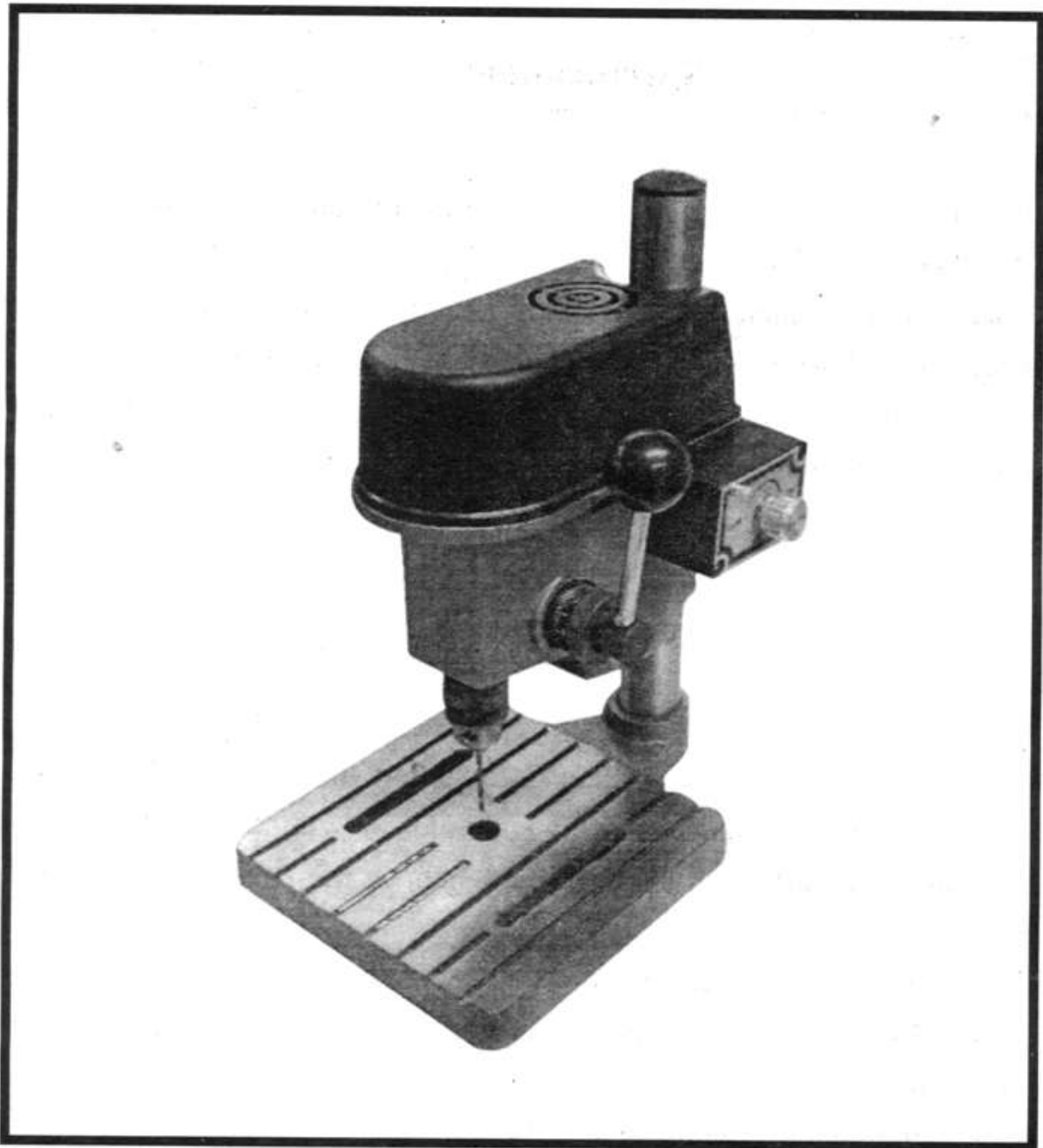


BENCH DRILL

OPERATING INSTRUCTION



Product Characteristics

It is of novel design, small and exquisite bulk, handy carry. It adopts single phase series motor with high rotating speed. It is an ideal tool for the household and fine&small hardware processing.

The cent of product has no class to adjust soon with single soon two kinds.

Specifications

Rated volt: 220V

Rated power: 100W

Max. drilling diameter:
steel materials--1/8 inch
non-metallic--1/4 inch
rials --3/16 inch

Rated frequency: 50Hz

Rated current: 0.55A

Drilling stroke: 1 inch

Max.distance between main

Axle end to worktable: 8 inch

Weight: 5 KG

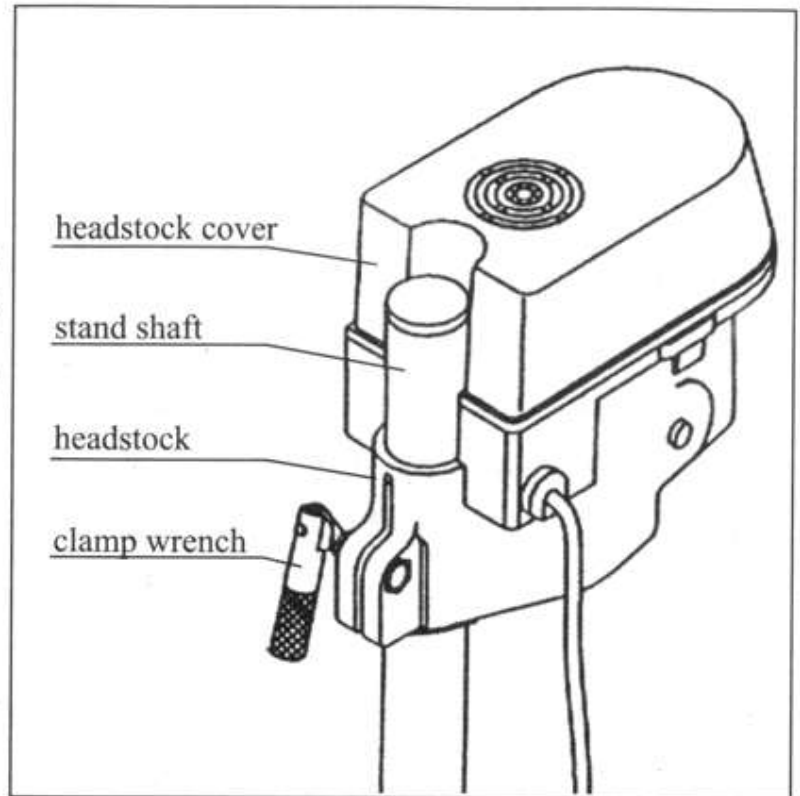
Rig out

1. Drilling machine the pedestal that put to insert the stand shaft (if the match is tighter, packing then the stand shaft top end holds up with the wood piece, the small hammer knocking softly), in steady workbench, in the pedestal, counteracting the bolt fixs.
- 2.Shall the handspick into the dentation shaft2.(plan2)
- 3.Connect before switching on power supply, please check the voltage with agree with physically.
4. The operation please read the manual before.

Operation manual

A: Adjust the headstock high:

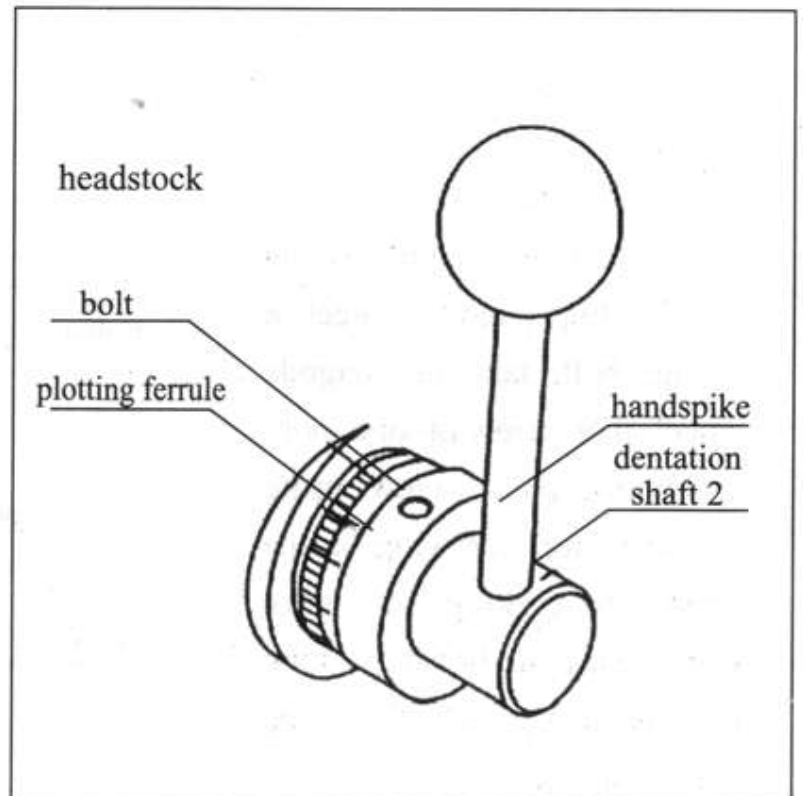
Give by hand headstock, loosen to open to clamp wrench moves to the appropriate position, closing the clamp wrench.



(plan 1)

B: Drilling deepness:

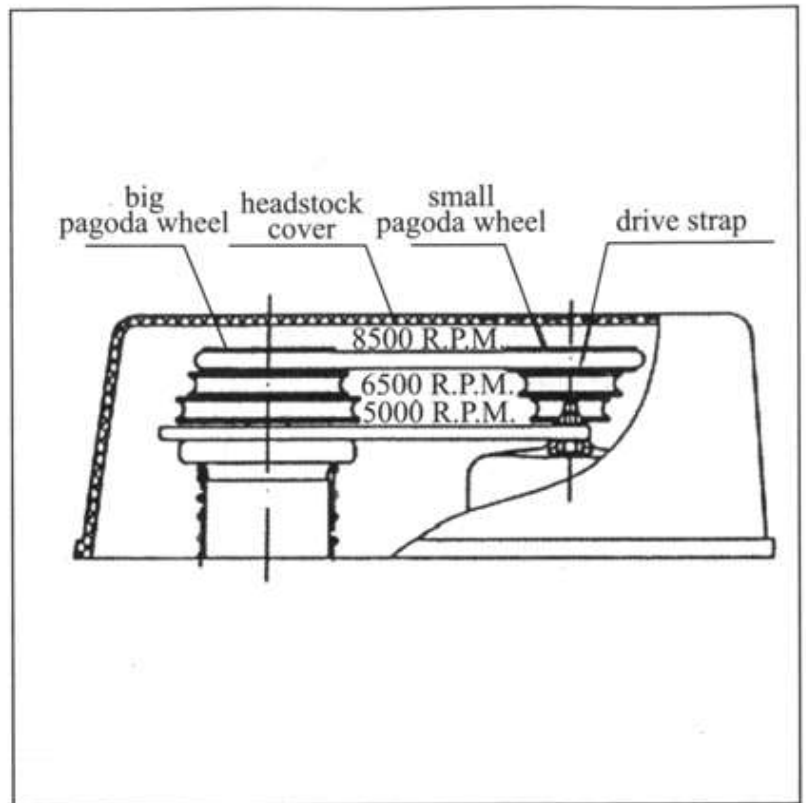
Loosen to open the bolt, manual getting down to pull the handspike, adjust to need the deepness, close the bolt.



(plan 2)

C: Adjust Rev:

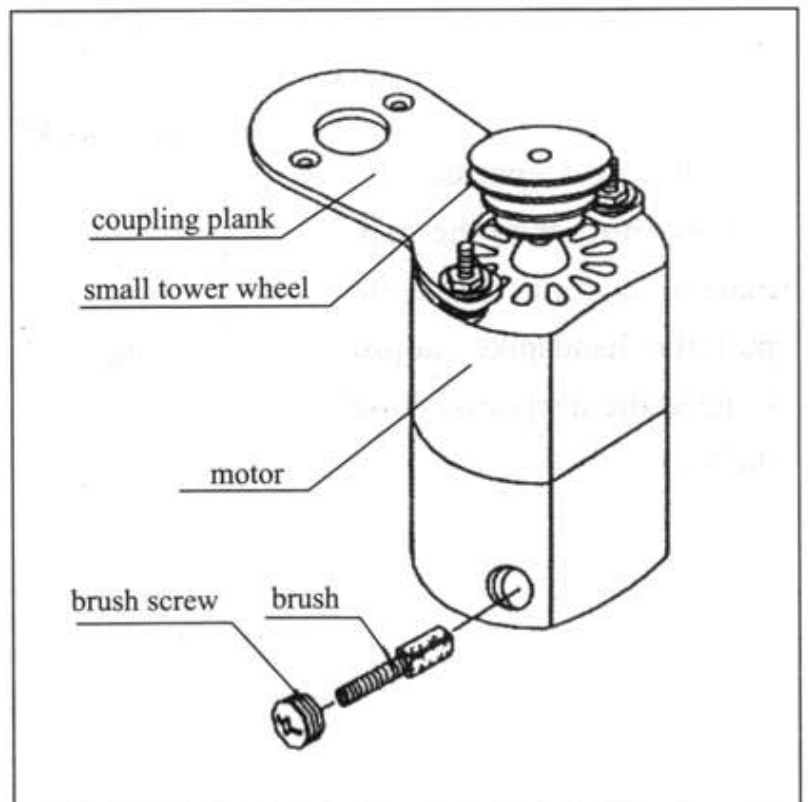
Cut the power supply, open the headstock cover, will spread to move to take by hand at two pagoda wheel a slot a dishes move, making pagoda wheel been last to the fit file.



(plan 3)

D: Transposition Brush:

Cut the power supply, screw on the big pagoda wheel a setting bolt, take out pagoda wheel, then screw on one more a coupling plank screw, bring up the motor. Screwing on the brush screw, taking out to have worn a way the brush, packing into the new brush, fasten up the brush screw.

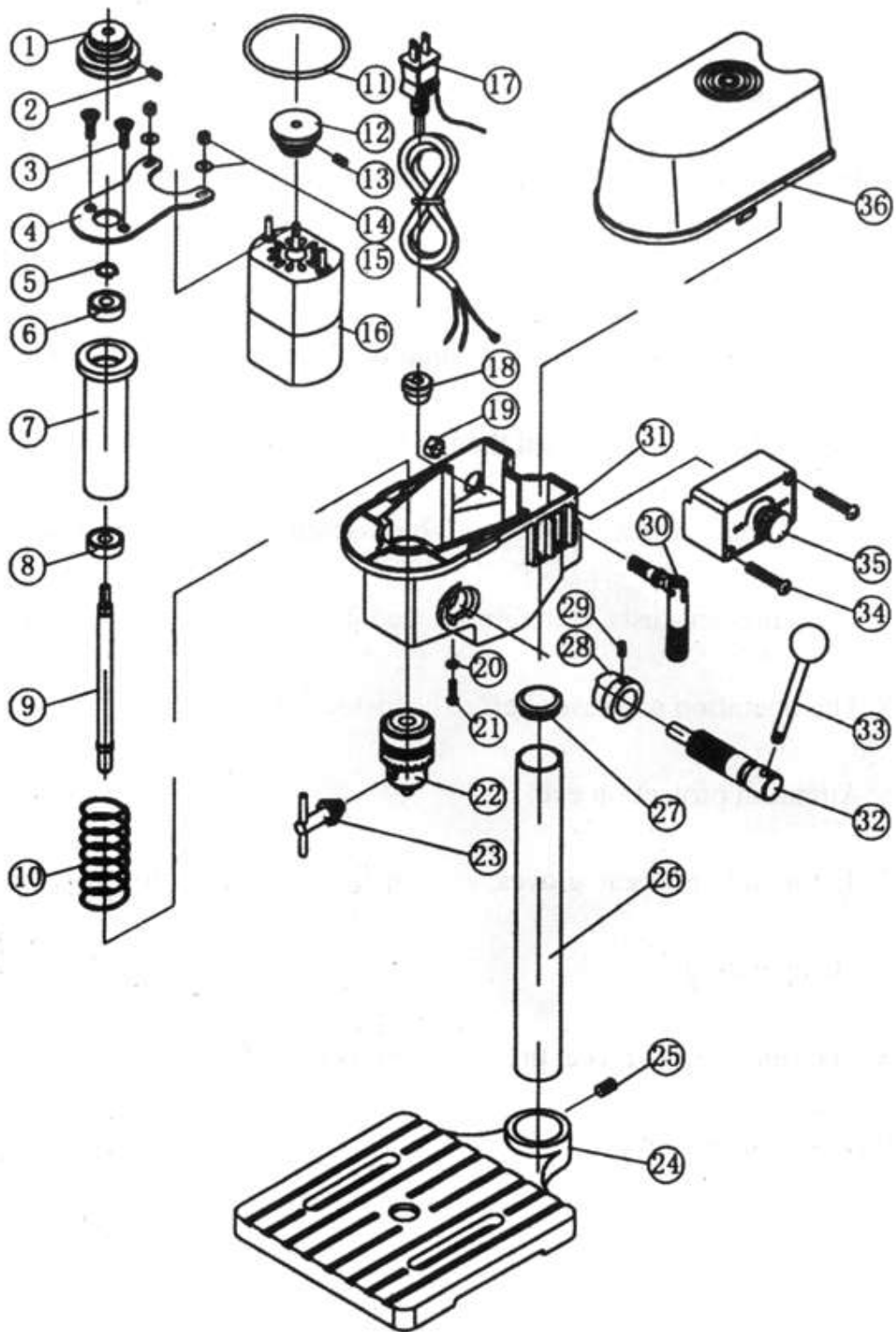


(plan 4)

Safety Warnings and Precautions

1. While using, the power cable needs to connect ground.
2. In stallwith adjust this machine current public affairs to cut off the power supply necessarily.
3. After using a period of time, should lubricate with stalk a bore a several drops of engine oil then in the stalk set.
4. Stand shaft surface and worktable use engine oil wipe, the in order to prevent rusts, if longrem need not, use butter wipe.
5. The operation insureses before headstock covers.
6. Attention protection eye.
7. It for bids to wear gloves, do not bare the body not knot tie while operating.
8. Fixation to workpiece, prevent workpiece eddy.
9. By rule usage rev.

Assembly Drawing



Parts list

Item	Description	Item	Description
1	Big pagoda wheel	19	Nut M8
2	Bolt M4x8	20	Gasket 4
3	Bolt M4x8	21	Bolt M4x18
4	Coupling plank	22	Drill chuck
5	Shap ring	23	Key
6	Fan	24	Pedestal
7	Dentation shaft 1	25	Bolt M8x8
8	Fan 60002	26	Stand shaft
9	Shaft	27	Stand shaft cover
10	Spring	28	Plotting ferrule
11	Drive strap	29	Bolt M5x10
12	Small pagoda wheel	30	Headstock clamp wrench
13	Bolt M4x8	31	Headstock
14	Nut M4	32	Dentation shaft 2
15	Gasket 4	33	Handspike
16	Motor	34	Bolt M4x38
17	Cord	35	Actiyator
18	Cord collet	36	Headstock cover